



LASER DIAGNOSTIC INSTRUMENTS

ROW

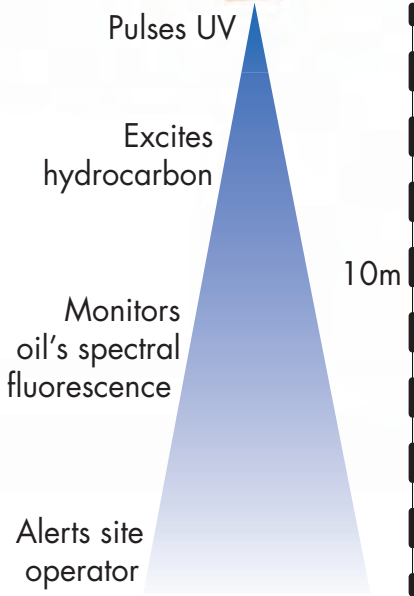
EARLY DETECTION
SYSTEM FOR OIL
ON WATER



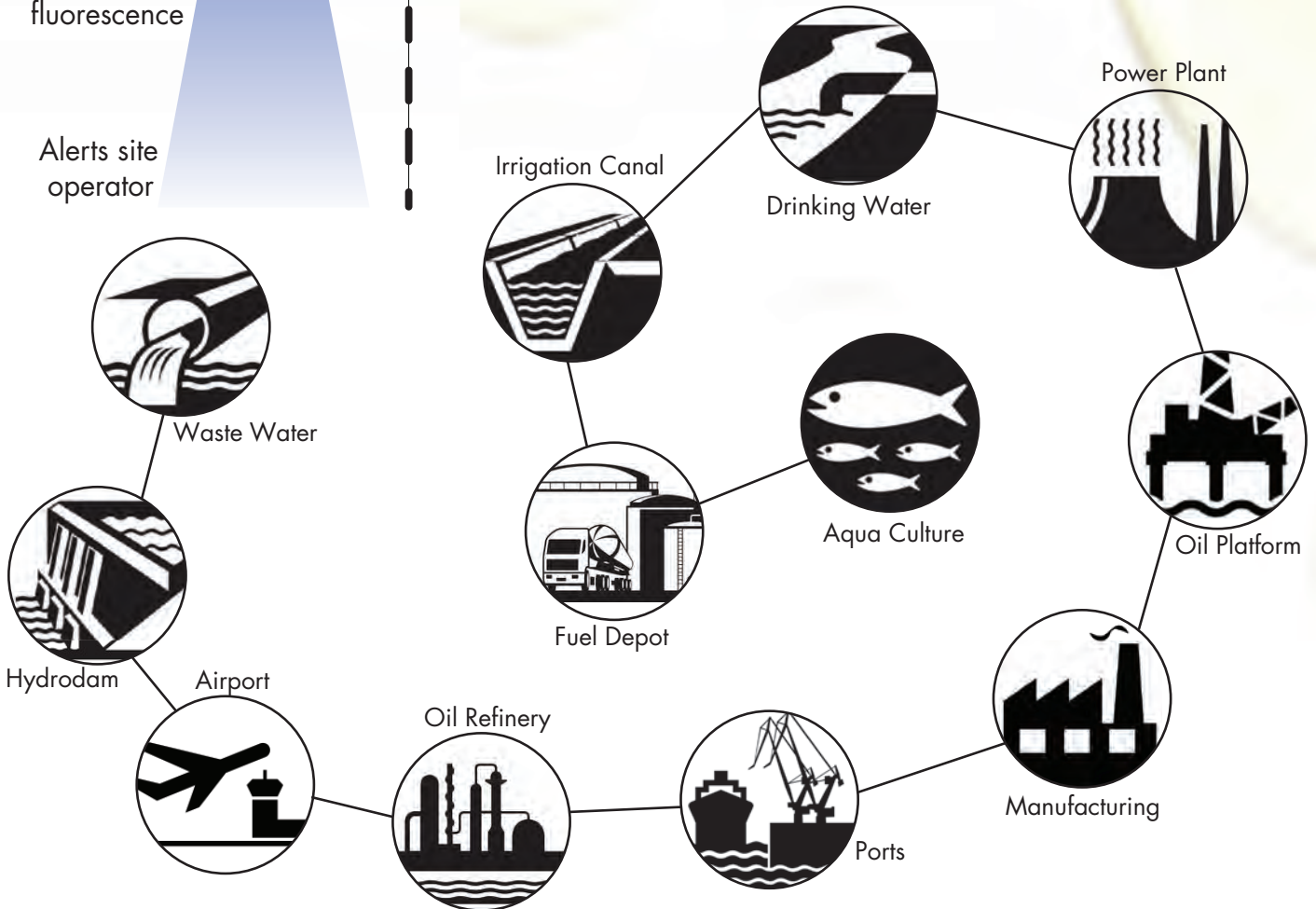
ROW ALUMINUM



ROW DETECTS:
 motor oils, turbine oils,
 vegetable oils, fuel oils,
 marine diesel oils,
 crude oils, heating oils, lube oils, hydraulic oils,
 gas oils, motor oils, mineral oils



The **ROW** (Remote Optical Watcher) is a non-contact sensor for detecting oil on water. Highly accurate and easy to maintain, the ROW detects and alerts you to unsuspecting oil spills. It provides 24/7 industrial and environmental water monitoring, whether at effluent discharge or influent intake points.

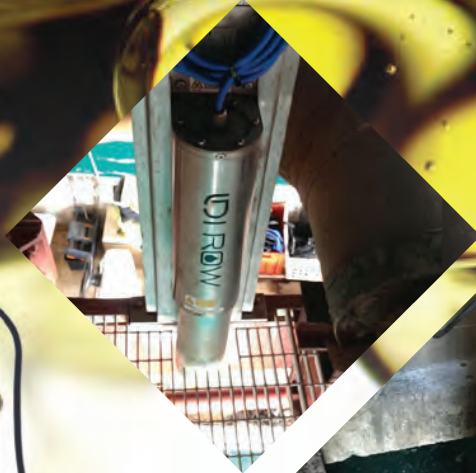


ROW ATEX EXD

For hazardous areas including Zone 1 designations, we offer the ROW Ex d Oil Detector in a flameproof (explosion-proof) 3rd party certified enclosure by Bartec.

- 316L Stainless Steel
- IP68
- 8m range
- 1-micron sensitivity
- 2W power consumption
- Explosion Proof Enclosure (Bartec)
Only Enclosure Certified*

All ROWs are compatible with standard industrial telemetry outputs (modbus, 4-20mA, relay) and multiple ROWs can be networked together.



ROW STAINLESS STEEL

For installations in corrosive conditions, the ROW comes in a Stainless Steel (316L) enclosure.

This ROW model offers a perfect balance between economic costs and rugged design to be installed in even the toughest environments.

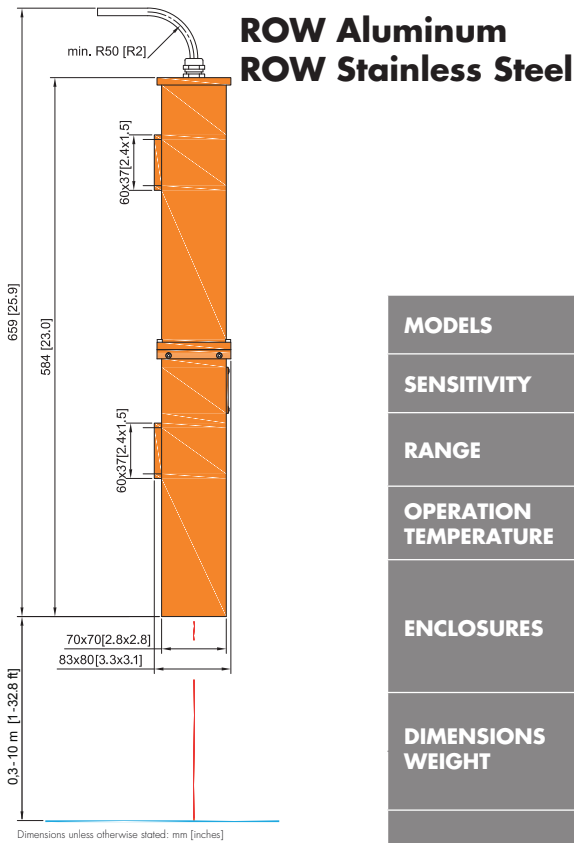
Whether at an oil terminal or in the open seas on a buoy, the ROW can handle the elements and connect seamlessly to your local telemetry.



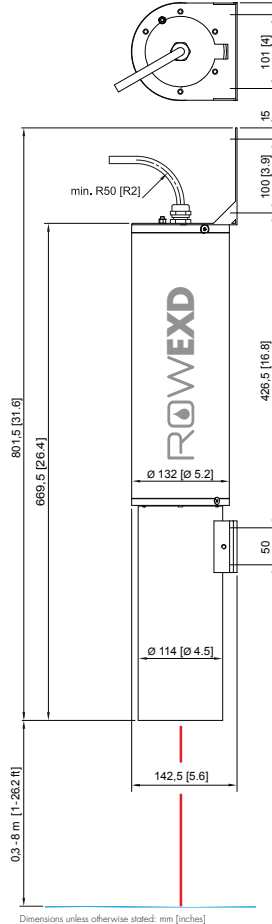
Laser Diagnostic Instruments (LDI) specializes in photonics and software algorithm creating advance fluorescence-based instruments. Located in Estonia (E.U.), LDI is a R&D company and a Manufacturer. All our products are designed and produced in-house. We hold nine core technology patents and continue to innovate our products; as such, you can count on our support for years to come.

Optical non-contact and autonomous sensor for real-time detection of oil contamination – UV fluorescence method.

TECHNICAL SPECIFICATIONS



ROW ATEX EXD



MODELS	O-2311A (Aluminum), O-2311S (Stainless Steel), O-2301B (ATEX EXD)	
SENSITIVITY	> 1 µm (micrometer) oil film	
RANGE	up to 10 m above surface (water or ground); ATEX EXD only 8 m	
OPERATION TEMPERATURE	-30°C to +60°C [-22°F to 140°F]	
ENCLOSURES	IP68, pressurised (Ar) hermetically sealed, weather proof Aluminum - Anodized, powder painted Stainless Steel - 316L ATEX EXD - 316L ATEX & IECEx flameproof enclosure, Zone 1 II 2 G Ex d IIB, Class 1, Division 1 Groups CD from Bartec	
DIMENSIONS WEIGHT	Aluminum - 659 x 83 x 80 mm [25.9 x 3.3 x 3.1 in] 1.7 kg [3.7 lbs] Stainless Steel - 686 x 139 x 139 mm [27 x 5.5 x 5.5 in] 6.9 kg [15.2 lbs] ATEX EXD - 669.5 x 142.5 x 132 mm [26.4 x 5.6 x 5.2 in] 12 kg [26.5 lbs]	
POWER OPTIONS	12 VDC (10V - 30V) as standard other options: 110/220 VAC 60/50 Hz AC/DC adapter, solar/battery options available	
POWER USAGE	< 2 Watt (DC)	
LIGHT SOURCE	pulsed UV LED	
LED LIFETIME	5 years typical, thereafter, LED replacement	
OUTPUTS	relay contacts, RS-485, 4-20 mA (as standard)	
TELEMETRY OPTIONS	RS-232 Ethernet/LAN Audio alarm Wireless Radio Link Wi-Fi GSM Custom Solutions	optional adapters available – contact Sales Engineer for additional information
USER INTERFACE	ROW Configurator for setup & adjustment ROW Manager for network visualization	
CERTIFICATIONS	CE: EN 61000-6-2, 61000-6-3 EN 61326-1, 61000-4-2, 61000-4-5, 61000-4-6, 61000-4-8, EN 61010-1 US EPA: (EPA/530/UST-90/009) IP68: EN 60529 DNV-2003-OSL-ATEX-0436U: Specific to ROW ATEX EXD EN/IEC: 60079-0, 60079-1 Only Enclosure Certified*	
WARRANTY	2 year factory warranty as standard, supported worldwide	